



BAYTOWN
WEST CHAMBERS COUNTY
ECONOMIC DEVELOPMENT
FOUNDATION

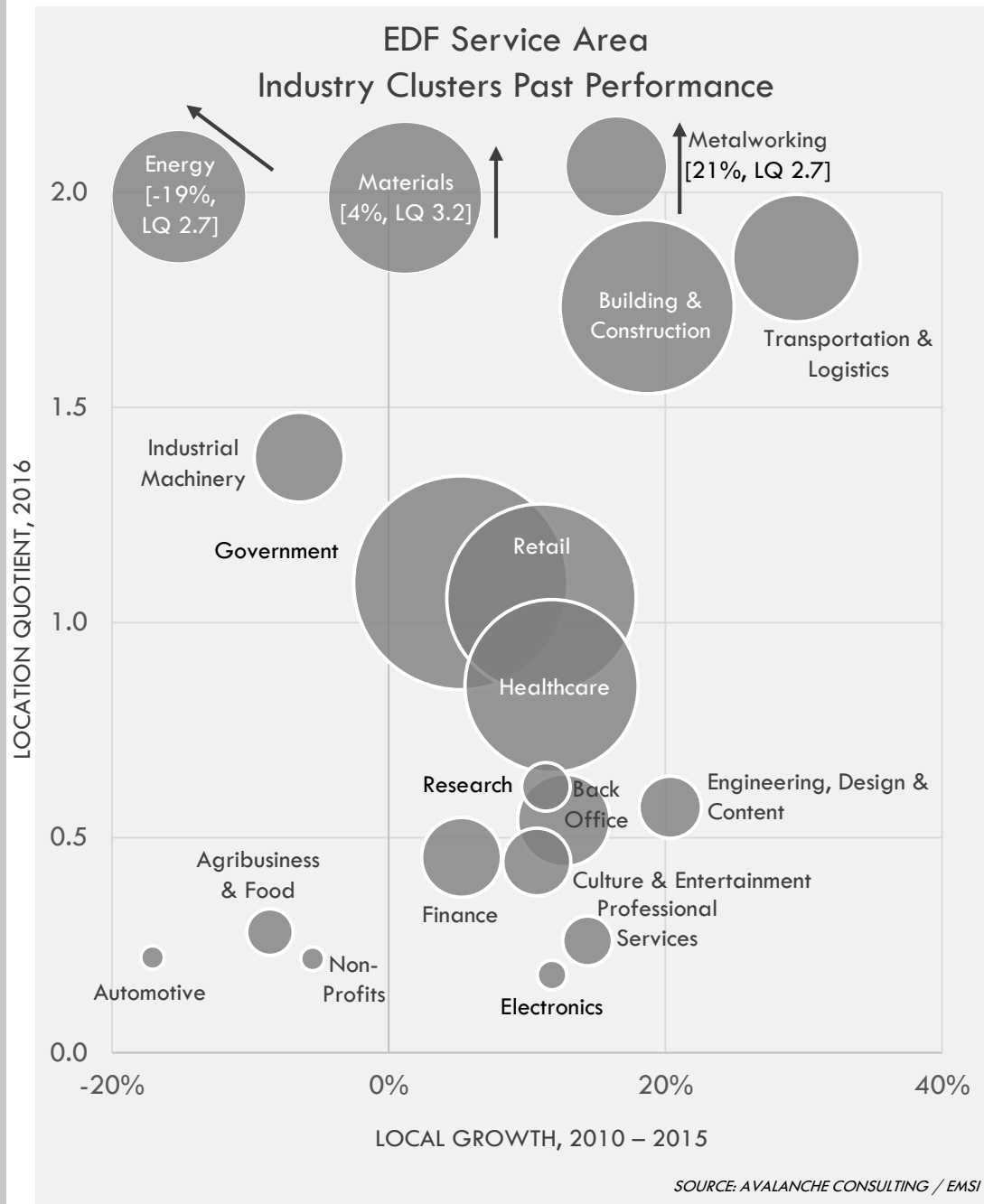
INDUSTRY CLUSTERS

PAST PERFORMANCE EVALUATION

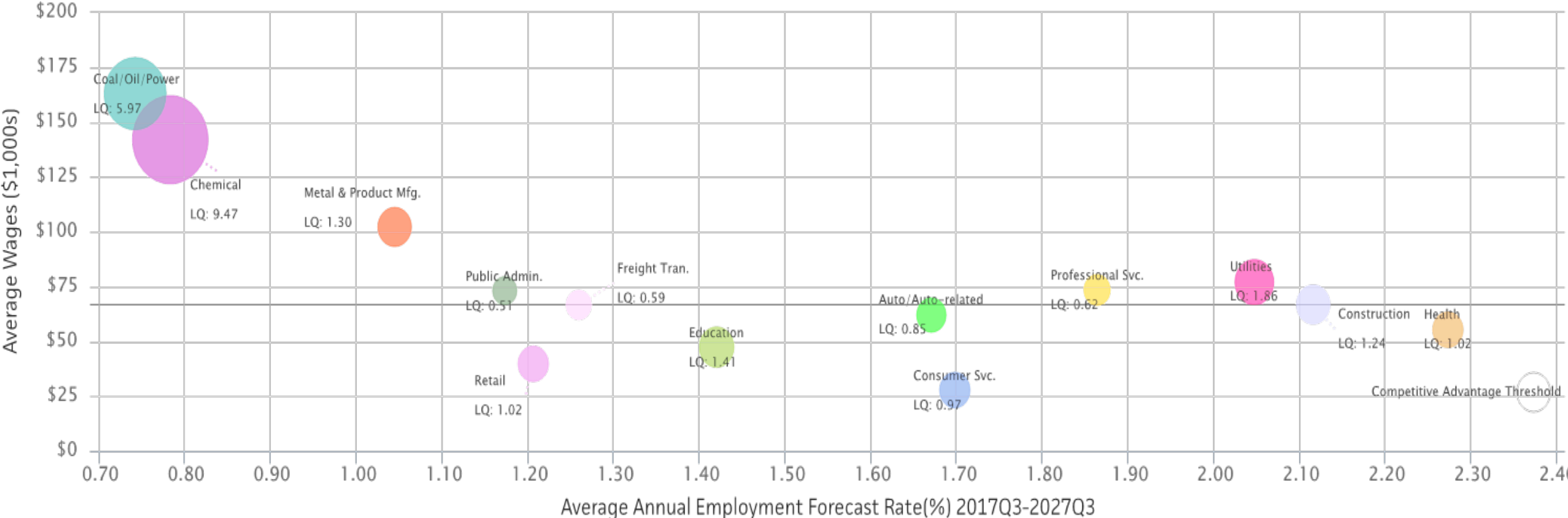


Employment in the EDF service area is dominated by a handful of larger, highly concentrated clusters. Collectively, five clusters—Building & Construction, Energy, Materials, Metalworking, and Transportation & Logistics—represent nearly 40% of all local jobs. In the US as a whole, these five clusters comprise less than 15% of all employment. Three other concentrated clusters—Government, Industrial Machinery, and Retail—comprise an additional 36% of employment. With the exception of Energy, all comparatively concentrated clusters in the EDF service area experienced job gains between 2011 and 2016.

Barring Healthcare, the EDF service area's less concentrated clusters are also much smaller. Still, most of these clusters are expanding locally. Between 2011 and 2016, only three less concentrated clusters experienced employment declines—Automotive, Agribusiness & Food, and Non-Profits.



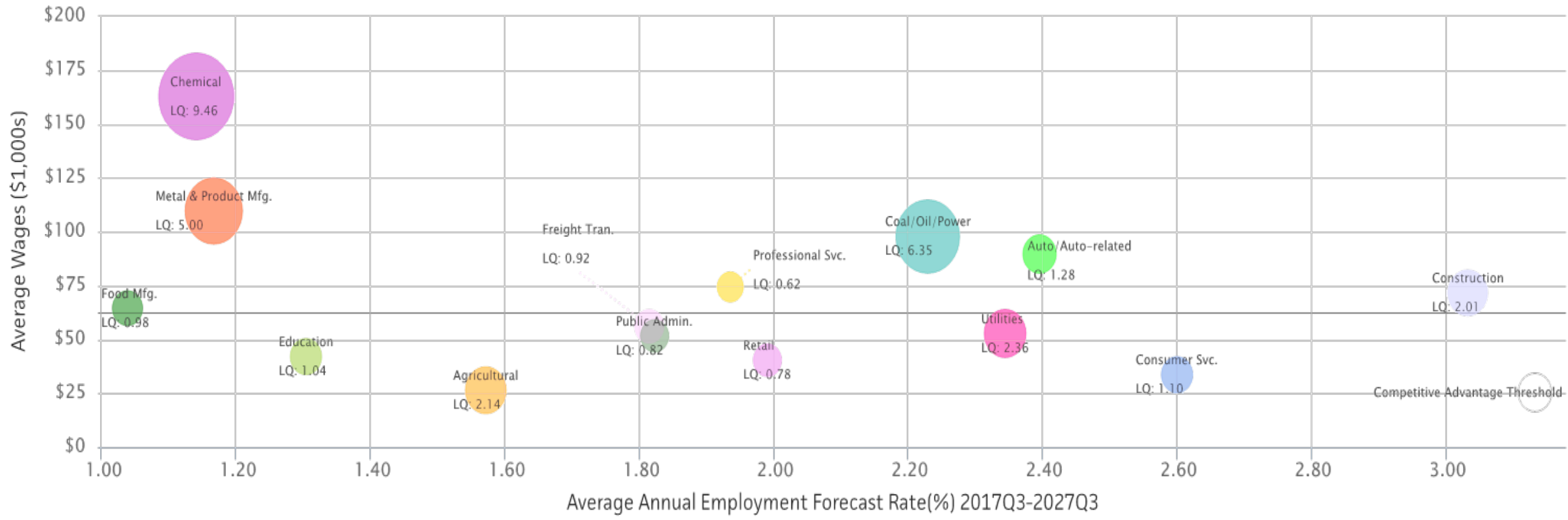
Industry Clusters for City of Baytown, TX as of 2017Q3



- Chemical
- Auto/Auto-related
- Metal & Product Mfg.
- Coal/Oil/Power
- Retail
- Professional Svc.
- Consumer Svc.
- Education
- Construction
- Freight Tran.
- Utilities
- Public Admin.
- Health
- Competitive Advantage Threshold

Source: JobsEQ®, Data as of 2017Q3

Industry Clusters for Chambers County, Texas as of 2017Q3



- Food Mfg.
- Agricultural
- Chemical
- Auto/Auto-related
- Metal & Product Mfg.
- Coal/Oil/Power
- Retail
- Professional Svc.
- Consumer Svc.
- Education
- Construction
- Freight Tran.
- Utilities
- Public Admin.
- Competitive Advantage Threshold

Source: JobsEQ®, Data as of 2017Q3